

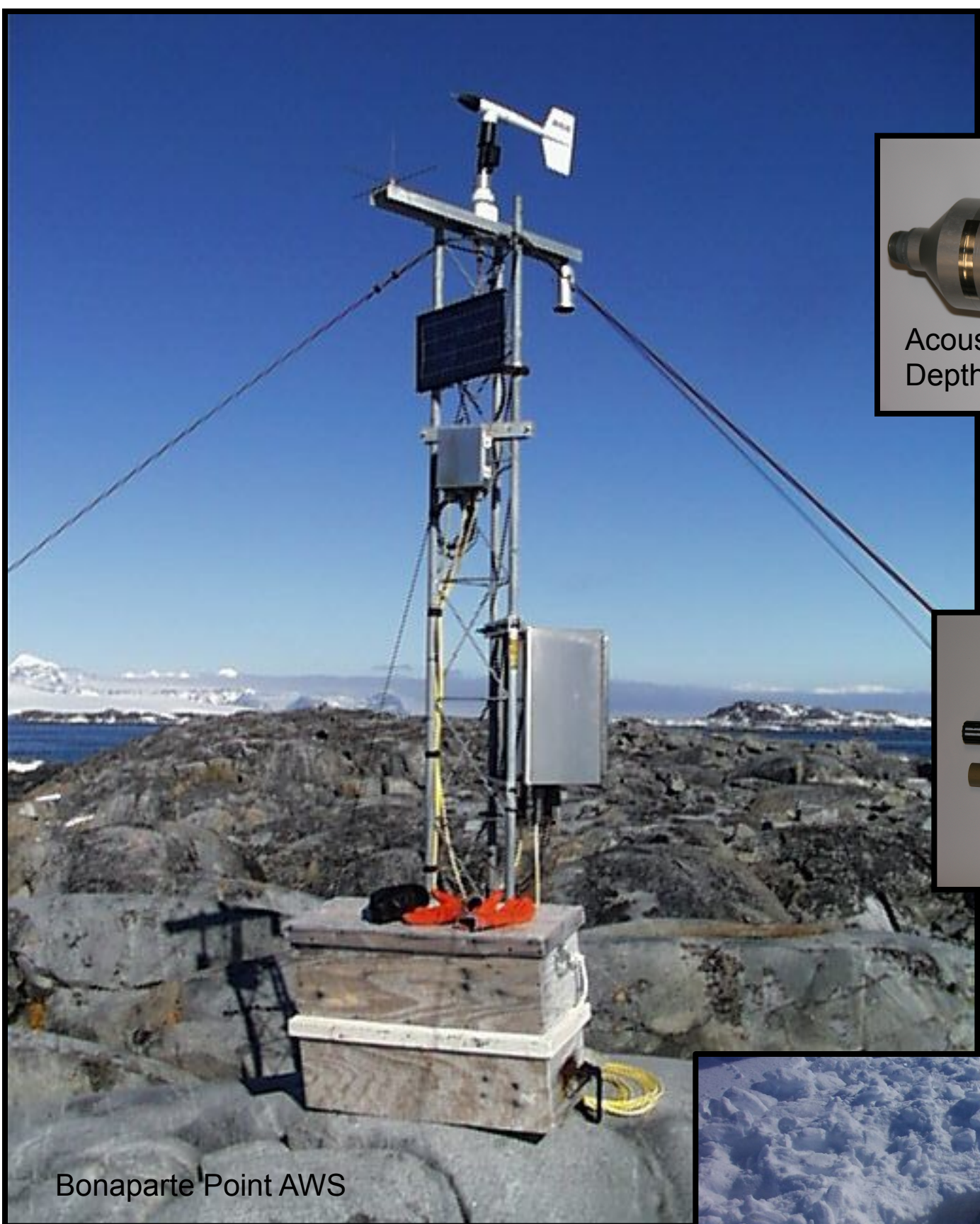
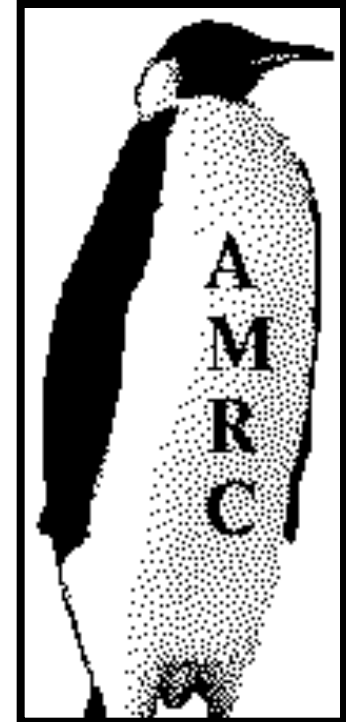
Antarctic Meteorological Research Center

Automatic Weather Station Project

Space Science and Engineering Center

University of Wisconsin-Madison

<http://amrc.ssec.wisc.edu/>



Bonaparte Point AWS

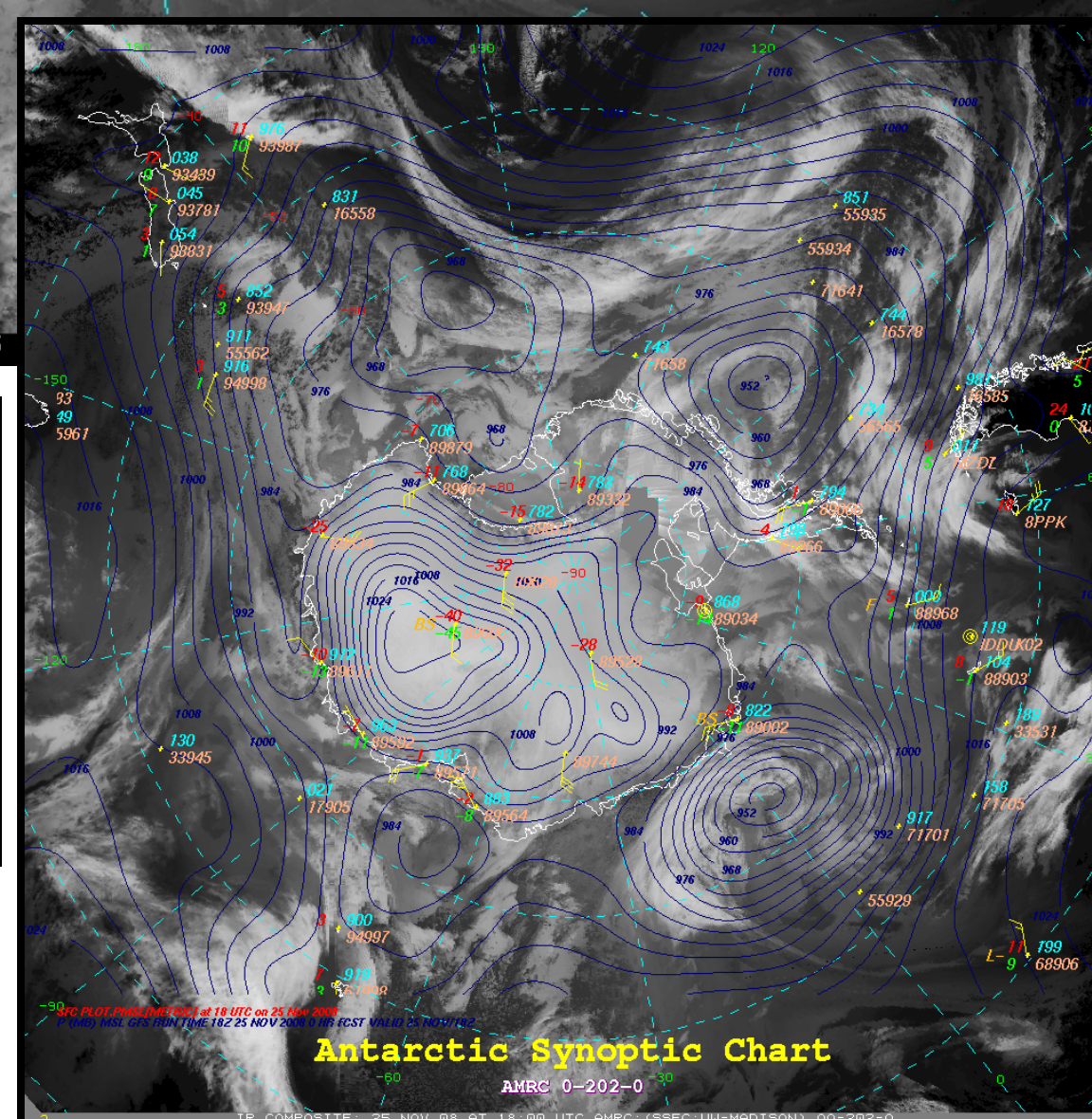
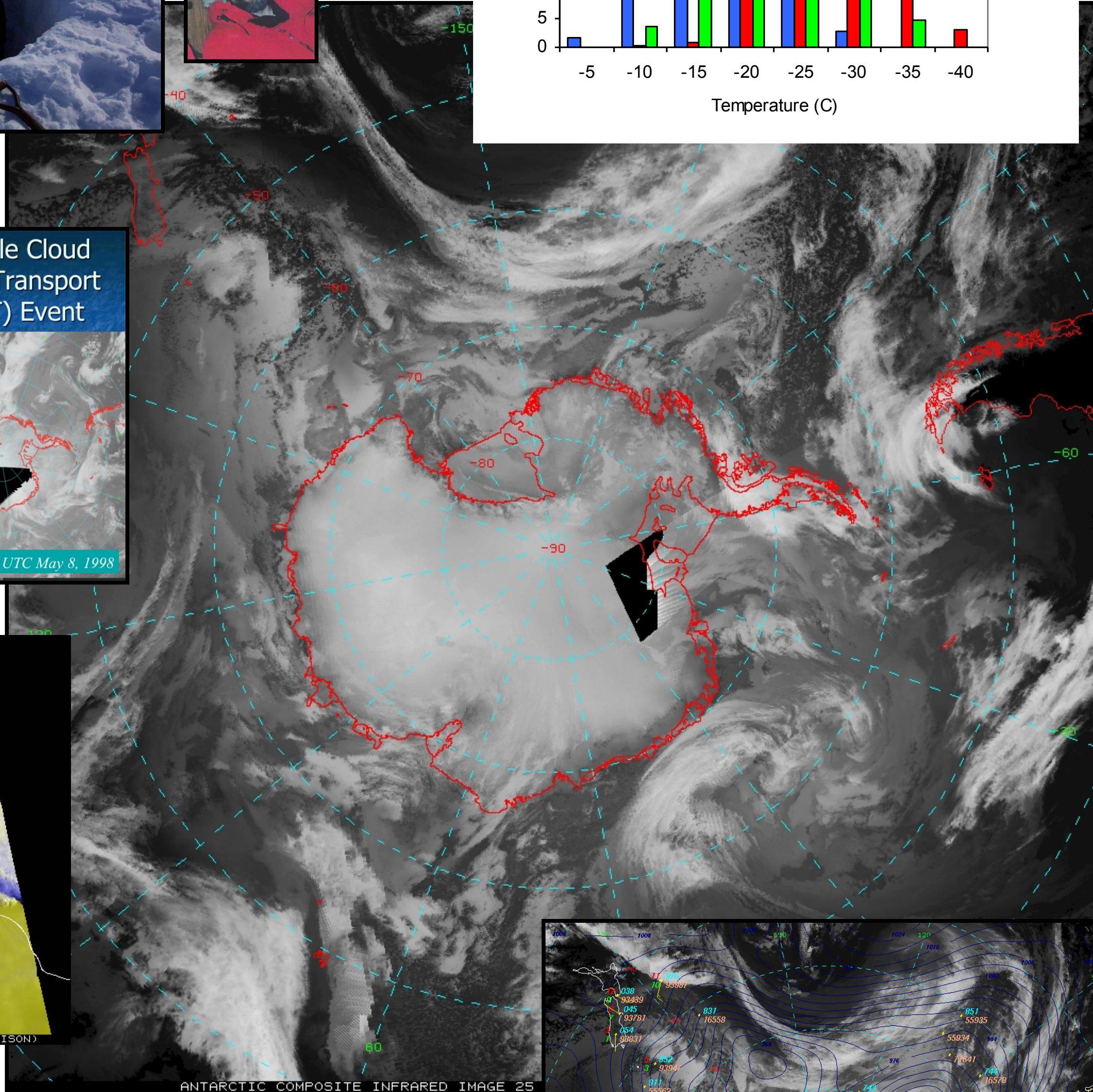
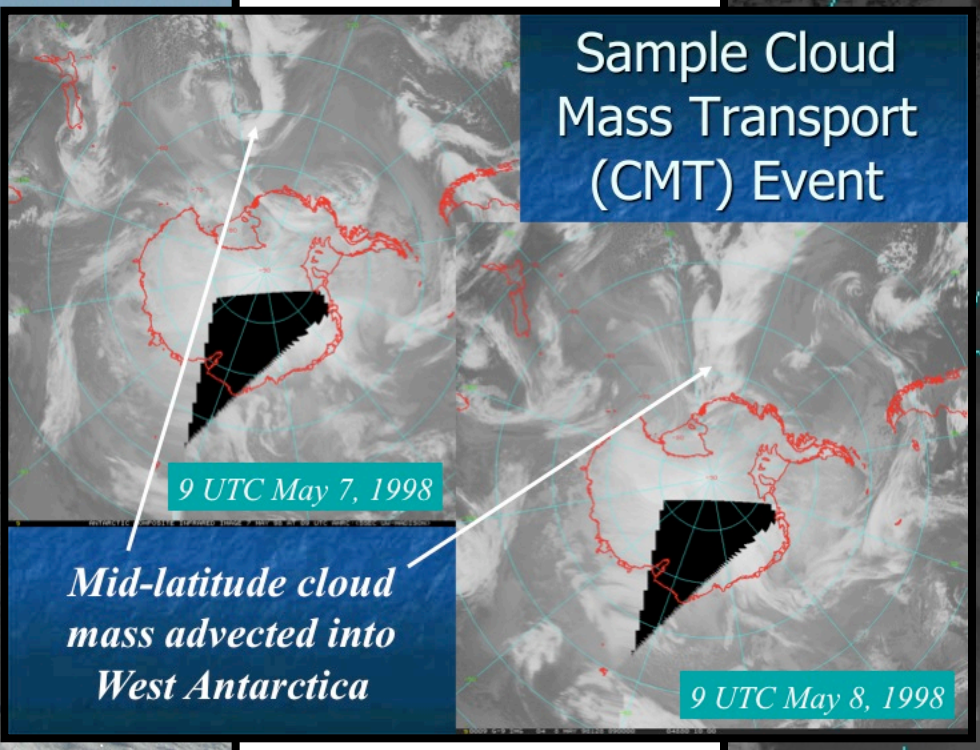
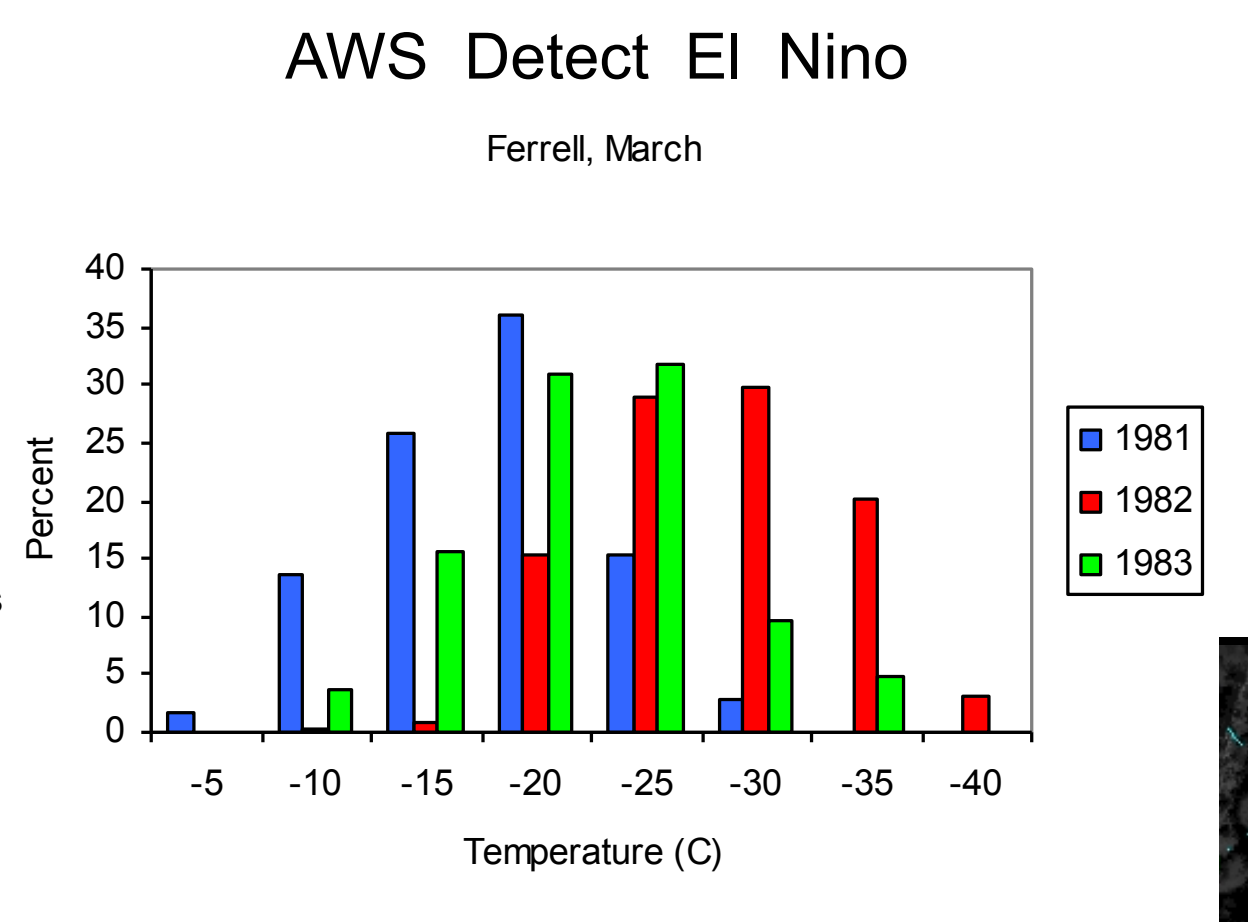
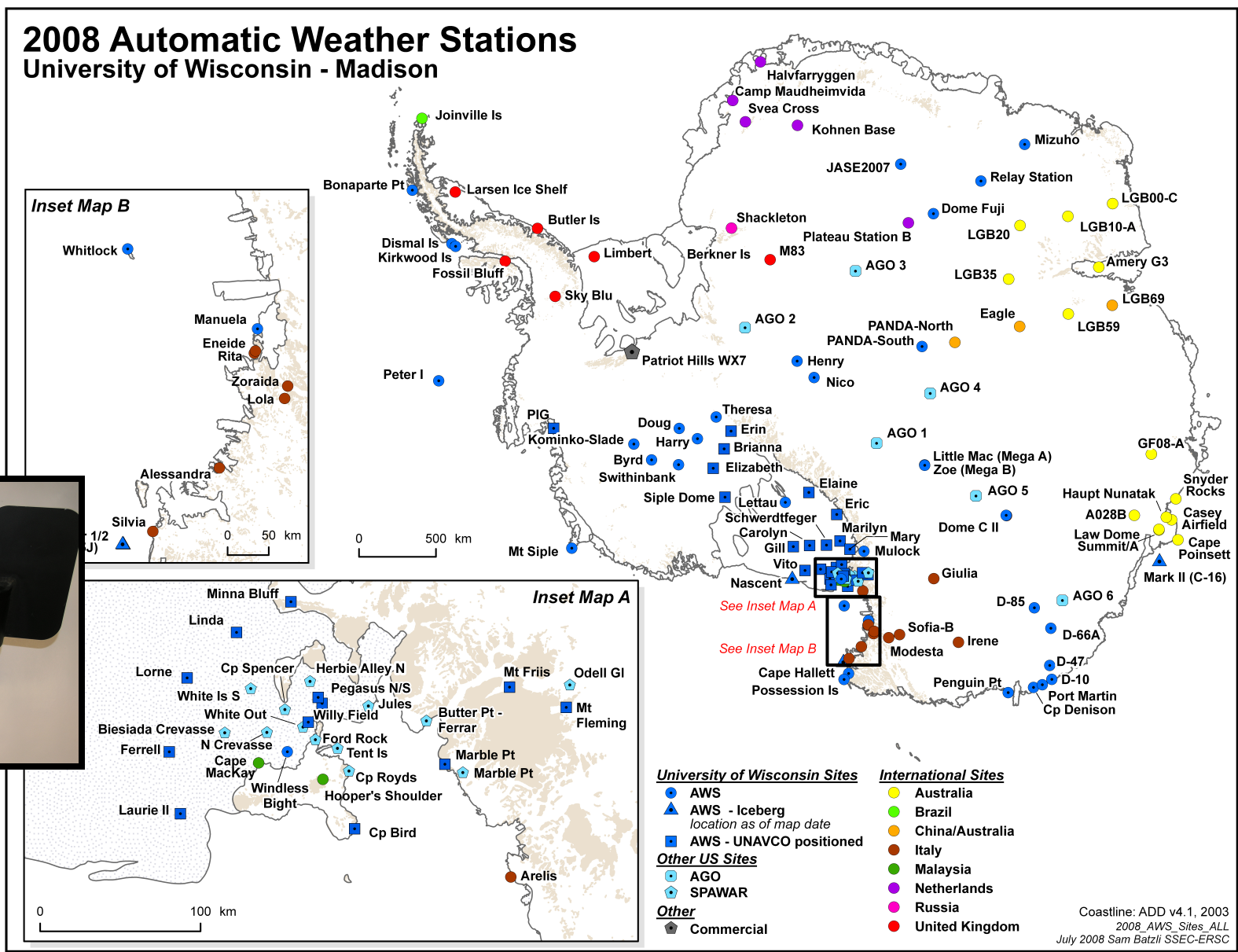
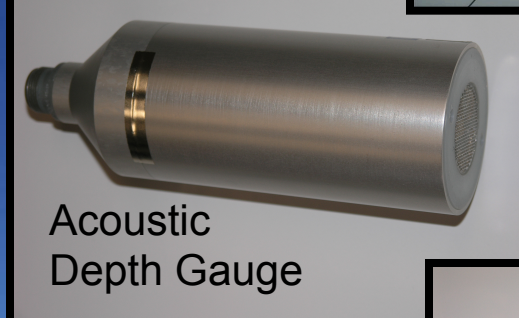
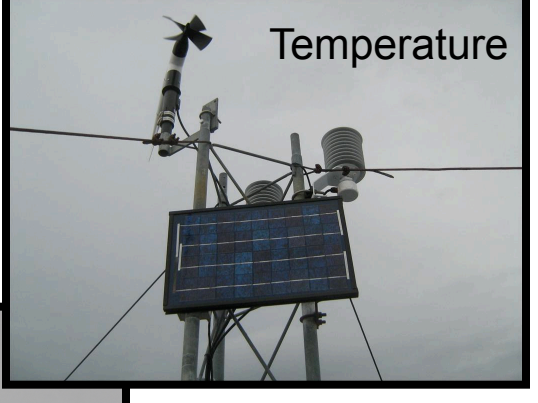
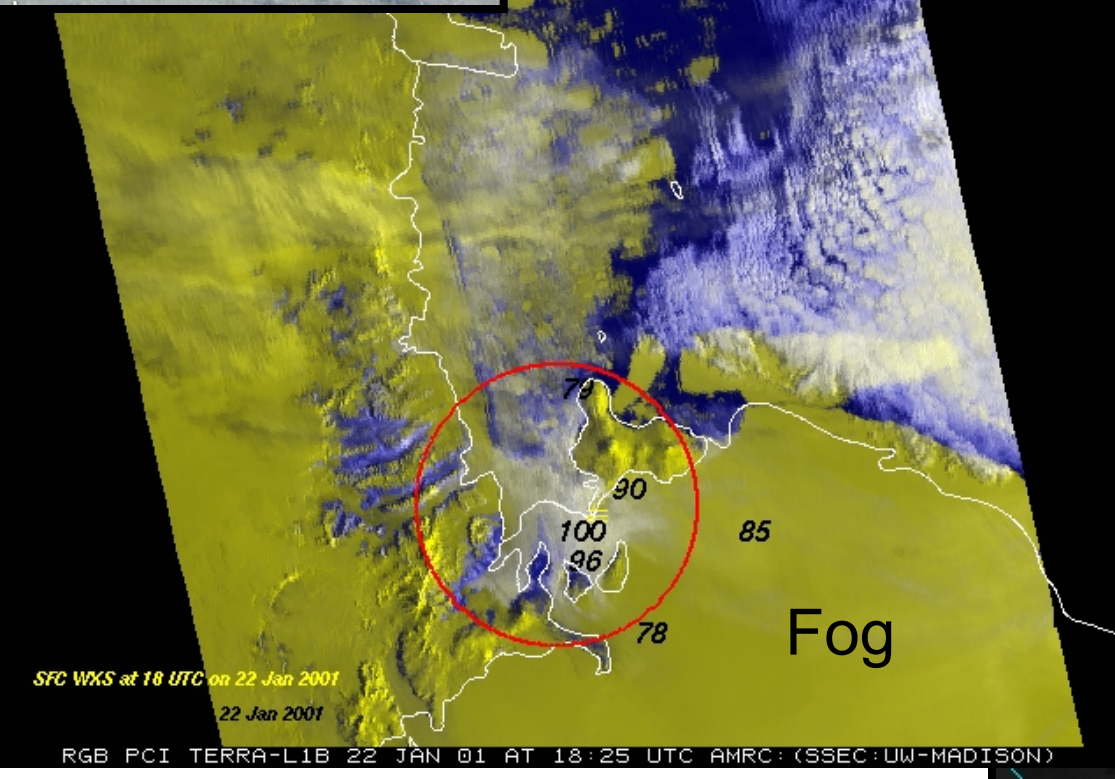
Jonathan Thom



Siple Dome AWS



Dr. Matthew Lazzara



Research Activities:

- * Long Term Climatology
- * El Nino Southern Oscillation Monitoring
- * Significant Weather Case Studies
- * Fog Studies
- * Ross Ice Shelf Air Stream (RAS)
- * Cloud Pattern Climatology
- * Atmospheric Motion Vectors
- * Storm Tracking
- * Antarctic Meteorological Data Distribution and Archive
- * Educational Outreach

