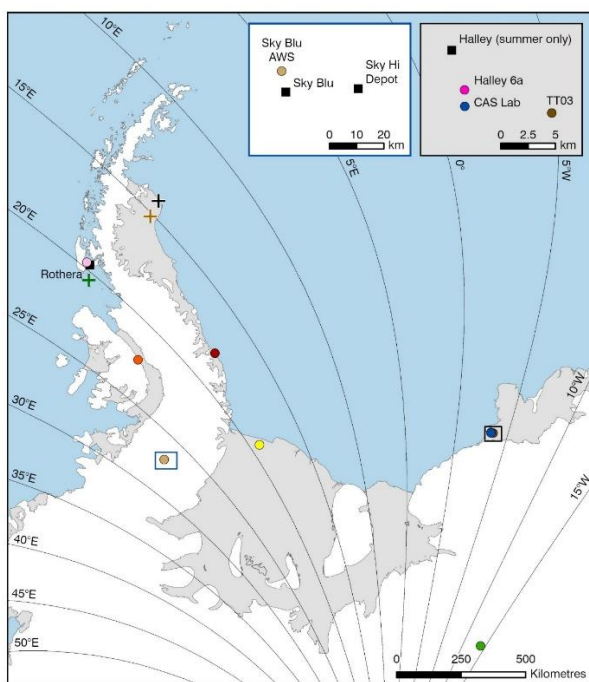


An Overview of AWS Servicing at Halley and Rothera Research Stations and Unusual Phenomena Observed at Halley During the Summer Season

Sabina Kucięba, Steve Colwell, Jo Cole

Halley and Rothera Research Stations, British Antarctic Survey

AWS maintained by the British Antarctic Survey were visited during the summer season. Annual maintenance, servicing, instrument checks, and station elevation adjustments were performed. Some AWS are located near research stations, but others are more remote and require travel by snowmobile or aircraft. The Rothera team serviced five stations in total; two stations could not be accessed this year due to poor weather conditions. The Halley team successfully visited all three weather stations this season. Additionally, it is worth noting that a rare phenomenon occurred at Halley Station this season. As in the previous year, freezing drizzle was observed – this time on four separate days. This type of precipitation is uncommon in this environment, as temperatures at Halley almost never exceed 0°C. A layer of ice was seen forming on metal objects, at times creating hazardous outdoor conditions.



Map 1 & 2: The BAS AWS Network